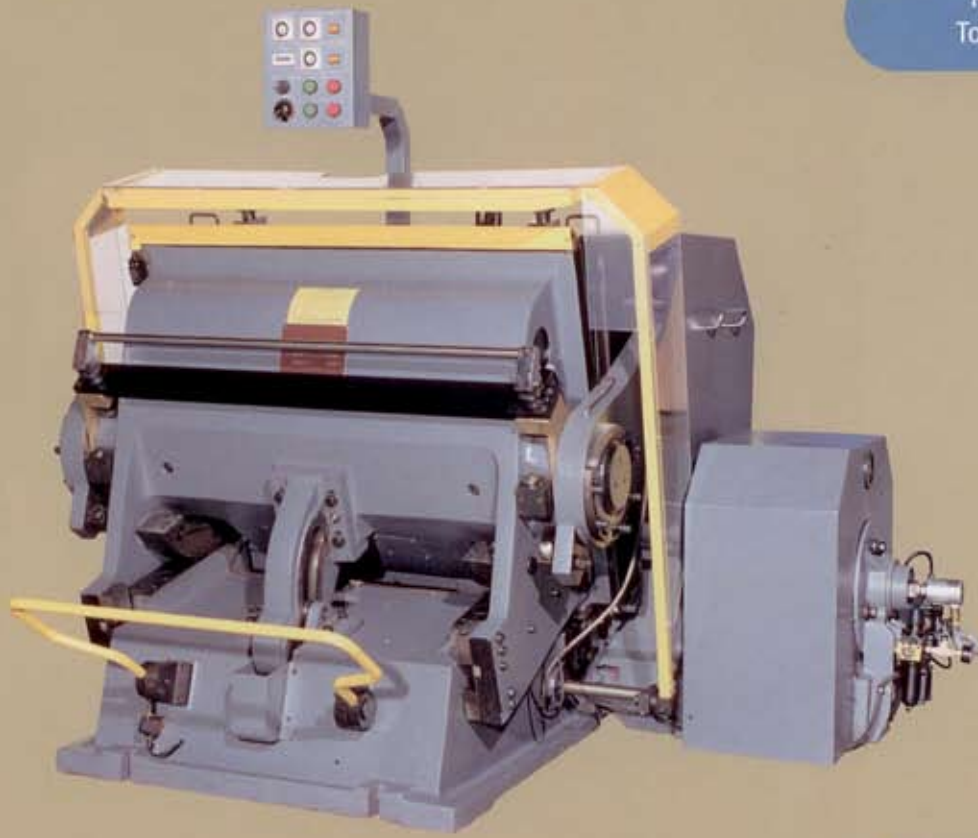


DIECUTTING AND CREASING MACHINE

BRAUSSE®



Heavy Duty
Mechanical Design

Precise
Tolerance

Economical
and Reliable

Operator
Safety Features

OUTSTANDING FEATURES

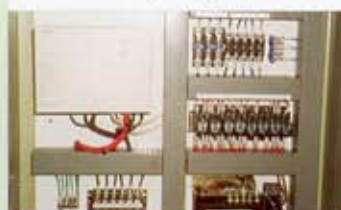
- Solid, compact machine design.
- Heavy duty cast machine base and frame.
- Reliable clutch drive with braking system (airclutch on PE-130, PE-160 and PE-2M).
- Safety guard and safety touch bar to meet North American safety standards.
- Stable and dynamic cutting pressure
- CSA approved electronic/electrical system.
- Electronic AC Inverter drive infinite speed control (not on PE-160 and PE-2M).
- Dwell timer at open & close position (only open dwell on PE-160 and PE-2M).
- Double micrometer infinite impression adjustment.
- Central lubrication system
- Special hardened diecutting plate
- Special wide opening for back clean up tool or optional heat plate (on PE-402/50, PE-202/50 and PE-102/50).
- Pneumatic cutting plate lifting device (on PE-160 and PE-2M).

PE - 402/50
PE - 202/50
PE - 102/50
PE - 102
PE - 130
PE - 160
PE - 2M

Safety guard or safety touch bar stops machine immediately at any working position when applied.



Top quality AC drive electronic components are used in electrical cabinet to provide excellent reliability. CSA approved.



Model PE-2M.



SPECIFICATIONS	PE-402/50	PE-202/50	PE-102	
Mobile bed size	710 x 535mm 28 x 21"	970 x 720mm 38 x 28 3/8"	1132 x 840mm 44 1/2 x 33"	
Inner chase size	675 x 485mm 26 1/2 x 19"	930 x 660mm 36 1/2 x 26"	1092 x 800mm 43 x 31 1/2"	
Max. cutting speed	30/min.	30/min.	30/min.	
Motor power	3 1/2 HP	5 HP	7 1/2 HP	
Machine dimensions	1430 x 1470 x 1480mm 56 1/4 x 57 3/4 x 58 1/4"	2000 x 1600 x 1620mm 78 x 63 x 64"	2120 x 2070 x 1470mm 83 x 81 x 58"	
Net weight	2200kg (4840 lbs)	4500kg (9900lbs)	5500kg (12100 lbs)	
SPECIFICATIONS	PE-102/50	PE-130	PE-160	PE-2M
Mobile bed size	1150 x 830mm 45 1/4 x 32 5/8"	1330 x 950mm 52 1/4 x 37 3/8"	1650 x 1320mm 65" x 52"	2000 x 1400mm 78 3/4 x 55"
Inner chase size	1020 x 740mm 40 x 29"	1300 x 920mm 51 1/8 x 36 1/4"	1600 x 1250mm 63" x 49 1/4"	1900 x 1300mm 75" x 51 1/8"
Max. cutting speed	30/min.	21/min.	16/min.	16/min.
Motor power	7 1/2 HP	7 1/2 HP	15 HP	20 HP
Machine dimensions	2150 x 1580 x 1360mm 85 x 62 x 53 1/2"	2140 x 2160 x 1600mm 84 x 85 x 63"	2190 x 2190 x 2160mm 86 1/4 x 86 1/4 x 85"	2340 x 2450 x 2122mm 92 1/8 x 96 1/2 x 83 1/2"
Net weight	6000kg (13200 lbs)	6500kg (14300 lbs)	12000kg (26400 lbs)	16000kg (35200 lbs)

In the interest of product improvement, the manufacturer reserves the right to change specifications and features without notice.





IMG HEADQUARTERS
Innovative Machinery Group
Dreherstrasse 11-15 • 42899
Remscheid • Germany
Tel: +49 (0) 2191/566-0
Fax: +49 (0) 2191/566-117
Email: info@img-group.org
www.img-group.org

HEADQUARTERS
#1 - 1500 Valmont Way
Richmond, British Columbia
Canada, V6V 1Y4
Tel: (604) 278-2027
Fax: (604) 278-1005
E-mail: printech@can.rogers.com

NORTHERN OFFICE
#14 - 7700 68th Avenue North
Brooklyn Park, MN
55428 U.S.A.
Tel: (763) 535-5885
Fax: (763) 535-6660
E-mail: north@brausse.com

EASTERN OFFICE
476 Bergen Blvd., Suite 2B
Ridgefield, NJ
07657 U.S.A.
Tel: (201) 941-1199
Fax: (201) 941-0738
E-mail: east@brausse.com